

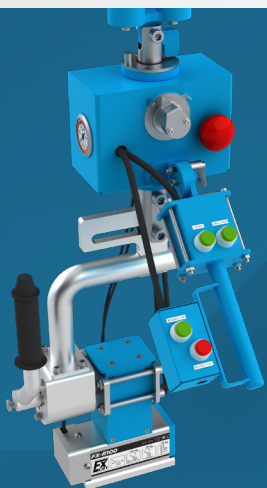
Magnetful 120

Combined power of Pneumatic & Magnetic Lifting

BPM is combining the ease of magnetic lifting with ergonomic and safe operation of pneumatic handling.

Due to the perfect load distribution, Magnetful 120 enable almost weightless lifting and handling in all directions with a wide range of different loads.

Pneumatically activated magnets and safety features make our products versatile and a powerful choice for industries such as manufacturing, assembly, logistics, and material handling.



Safe

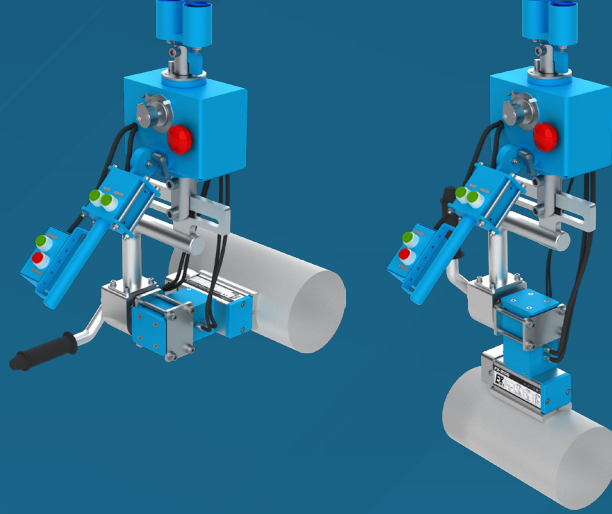
Operator can't turn the magnet off while the load is lifted. Magnet can be turned off only when the load is safely on the surface.

The system does not permit lifting unless the magnet is placed in the correct position and fully activated.



Flexible

Magnetful 120 can grab loads from the top or the side. Can be used to lift loads in different sizes and shapes.



The Manipulator

The balance of the load is maintained by connecting two steel cables to the balance unit. Manipulators, either floor mounted or ceiling mounted and consists of two arms, has a total of two brakes on the arm rotation axis.

Works with dry, filtrated (40 µm) and oil free compressed air (min. 0.7/0.8 MPa).

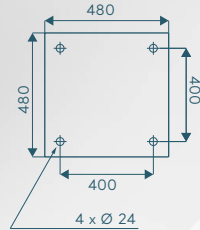
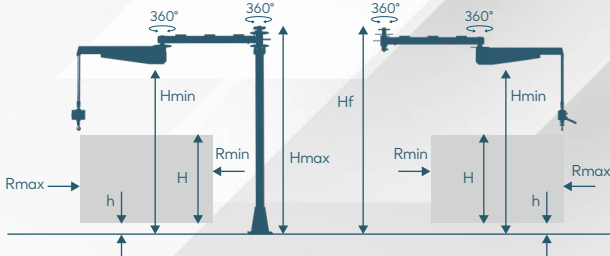
120 kg max. weight capacity. 3.000 mm max. radius. 1.800 mm vertical lift. 50 nl/min max. air consumption.

Weight Capacity / kg

Max. Radius / mm	Rmax	3000
Min. Radius / mm	Rmin	420
Vertical Lift / mm	H	1800
Min. Vertical Lift / mm	*h	200
Max. Height / mm	*Hmax	2635
Max. Ceiling Height / mm	*Hf	2550
Min. Height / mm	*Hmin	2000

* Marked dimensions can change according to the customer request.

Mounting Plate Dimensions (mm)

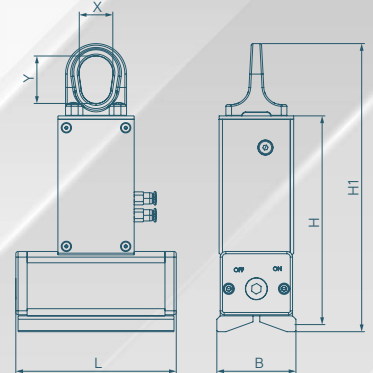


The Magnet

Designed for use with air operated hoists. Pneumatically activated and disabled. Each model also has an emergency release, so you always have full control.

Model	Max. Load capacity (kg)		Max. Load capacity from (mm)	Dimensions (mm)						Weight (kg)
	flat	round		L	B	H	H1	R	X/Y	
FX-R100 Pneumatic	80 kg	Ø25-150 mm 80 kg	8	195	64	241	311	134	30/42	5,5
FX-R225 Pneumatic	225 kg	Ø50-205 mm 225 kg	10	265	87	295	376	188	42/53	13

Safety factor 3,5/Test method EN 13155 max. Operation temperature 80°C



Scan the qr-code to watch our product video.

